

## Professional Services & Managed IT

### AZURE SERVICES

Kambrian is an authorized Microsoft Azure CSP partner who can help with deployment of Azure services, such as IaaS, PaaS, and SaaS.

### WORKLOAD ANALYSIS

Kambrian can provide workload analysis to give insight on the usage of applications and hardware to best optimize resources and determine cloud-ready workloads.

### HYBRID CLOUD SOLUTIONS

Kambrian brings support and expertise from the inception of the IT projects through post-implementation. Kambrian will ensure the successful deployment and use of all IT services and projects.

### NETWORK SERVICES AND ENDPOINT SECURITY

Kambrian will suggest security solutions at the Network and Endpoint levels. Kambrian will provide Cloud-Based and Zero Day Endpoint Protection for all endpoints in your environment to be paired with network security appliances like gateways and next generation firewalls. We also offer additional NOC and SOC services, as needed.

As a **Microsoft Silver Partner**, Kambrian specializes in Microsoft Technology Stack and Office 365. We offer licenses and services, such as SharePoint Online, OneDrive, Office 365, Dynamics 365, Intune Mobile Device Management, Projects, and Server 2012 and 2016. Our team of engineers and sales technicians will help optimize your existing Microsoft environment with any new features or products that you are looking to integrate.

**(NEW!) CMAS # 3-18-70-3626A, SCHEDULE 70 # 47QTCA19D000A, E-RATE #143051132**



Kambrian is an **HPE Partner** for Data Center Competency. With the growing demands of IT administration and the ever-expanding threat landscape, maintaining IT infrastructures increasingly affects critical business resources.

Kambrian's Managed IT Services will assist your team to avoid reactive situations and being in "survival mode". Instead, we help you proactively focus on areas that are more strategic to your company. As an extension of your business, Kambrian's team of experts will help keep your applications and devices optimized and secure. This will allow your employees to concentrate on growing the core operations of your business, without worrying about the drawback of technology overhead and risk of downtime. As a result, **our customers sleep better at night!**



IT Infrastructure Design, Consulting, and Planning, and Assessment Services



Penetration Test & Assessments (Network & Wireless)



Data Center, Virtualization, Server, Storage, and Networks Designs & Health



Managed Services and On-Going Support

## Performance, Reliability, Scalability, Optimization

## Field Services (Low-Voltage & IT)

Kambrian has a team of experienced field technicians to deliver quality service for service tickets and projects both IT and low-voltage systems. Our technicians are BICSI-certified. We have customers from commercial segments (e.g. Walmart, Costco, entertainment) and public sectors (LA County and UCLA)

For low-voltage cabling, we cover both security systems and structured cabling. For IT, our technicians perform racking, stacking, and cabling of IT data centers, telecom closets and network data cabling in addition to wireless surveys and installations.



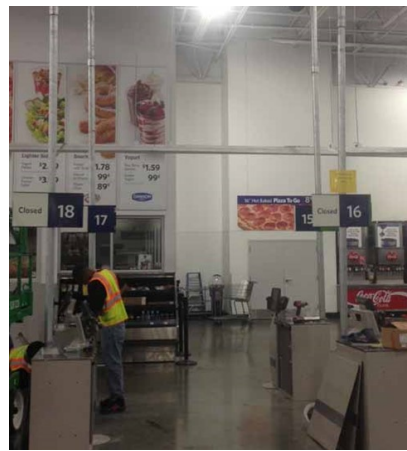
Security Systems (CCTV)



Security Systems (Access Control)



Telecom Install



POS

### SCOPE

Security Systems  
CCTV Cameras  
Video Surveillance  
Access Control  
Voice, Data, Video  
Fiber Optic  
AV (Audio Visual)  
Digital Signage  
Video Wall  
POS  
Data Center Builds  
Telecom Closets  
Network Data Cabling  
Router Configuration & Turn-Up  
Wireless Access Point (WAP) Installation  
Wireless Site Survey

### SERVICES

Installation  
Maintenance  
De-installs  
Field Dispatches  
Multisite Rollout  
Projects  
Site Surveys  
Estimating  
Scheduling  
Project Management  
Quality Assurance  
Assets Disposition

### License, Insured, and Bonded

- **CA:** C7 License # 997330, DIR# 1000003945
- **NV:** C2D License # 0083078
- **WA:** EC License # KambrianBRC\*821QW
- Insurance: \$5 million umbrella coverage, Bonding: \$4 million



Video Wall

Quality, Reliability, Scalability, Geo Coverage



## Product Selection

- We will consult with you on your IT needs to create custom solutions.

## Procurement

- We will source from various IT companies and follow your unique procurement process.

## Financing

- We will engage with you to find the most cost-effective purchase or financing plan.

## Implementation

- We will assist with deployment, and installation, and post-sales services.

Kambrian Corporation is an IT Managed Services Provider (MSP) providing quality IT solutions (software, hardware, and services). We are differentiated by our industry specialization, our team's corporate experience, and our dedication to quality. We are a trusted IT supplier - responsible and responsive.

## OUR CUSTOMERS SLEEP BETTER AT NIGHT!

### Customer Benefits:

- Quality
- Innovation
- Productivity
- Cost Savings

### Company Values:

- Integrity
- Quality Products & Services
- Customer Satisfaction
- Creativity and Innovation

## INFORMATION TECHNOLOGY SOLUTIONS

### Virtualization



### Networking



### Security



### Storage



## Channel Authorization

ACER  
Adobe  
ADTRAN  
APC  
Avocent  
Barracuda  
Belkin  
BeyondTrust  
Blackberry  
BlueQcoat  
Cables to Go  
Check Point  
CISCO  
Citrix  
Conduvis  
Dell  
Diskeeper  
Double-Take  
ELO Touch Systems  
Entrust  
Epson  
EqualLogic  
Ergotron  
Filemaker  
Fujitsu  
GlobalSCAPE  
Heat Software  
Hitachi  
HP  
Ipswitch  
Imperva  
Kingston  
Lenovo  
Lexmark  
Liebert  
Logitech  
LiveAction  
McAfee  
Microsoft  
NEC  
Netgear  
Plantronics  
Printer Logic  
Quantum  
Retina  
RSA  
Samsung  
Scale Computing  
Seagate  
Solarwinds  
SonicWALL  
Supernova  
Symantec  
Toshiba  
Trend Micro  
Tripp Lite  
Veeam  
Viewsonic  
VMWare  
WebSense  
Western Digital  
WYSE  
XEROX

## Sample Customers:

- Federal: Air Force; Navy, Army, Veterans affairs, Dept of Treasury
- The State of California
- Local: Los Angeles County Metropolitan Transportation Authority; Orange County Transportation Authority; Los Angeles County
- Utilities: LADWP, Metropolitan Water District, Inland Empire Utilities Agency
- Transportation: LA World Airports

## Company Info:



- **Small Business:** 8a, SDB, WOSB, SBE with the State of California #1109163, CA Corp #C3220737
- **Certification:** MBE (by NMSDC, #7876), WBE (by WBENC) ; WOSB (by WBENC # W100055); WMBE (by Supplier Clearinghouse #9KS00015)
- **Low-Voltage:** California C7 License #997330; Nevada C2D License #0083078
- **State of DIR #** 1000003945
- **DUNS:** 831603241
- **EIN:** 27-0730446; S-Corp



## Company Recognitions:

- Nominated as WBE Supplier of the Year (Class II) by Disney in 2016
- Nominated as Supplier of the Year by LAWA (LA World Airports) in SCMBDC in 2014 (Class II), 2013 (Class II) and 2011 (Class I)
- USPAAC 2014 Fast 50 Asian American Business Award
- Nominated as Supplier of the Year in WBEC -West in 2012 (Class II)
- Sr. Vice Chair in LA Forum of WBEC-West in 2013; Vice Chair in 2012
- Director of ABA-LA (Asian Business Association Los Angeles), Board of Director in 2013

## NAICS Codes:

- 423430 - Computer and Computer Peripheral Equipment and Software Merchant Wholesalers
- 518210 - Data Processing, Hosting, and Related Services
- 541511 - Custom Computer Programming Services
- 541512 - Computer Systems Design Services
- 541519 - Other Computer Related Services
- 811212 - Computer and Office Machine Repair and Maintenance
- 811211 - Consumer Electronic Repair and Maintenance
- 423420 - Office Equipment Merchant Wholesalers
- 238210 - Electrical Contractors and Other Wiring Installation Contractors
- 561621 - Security Systems Services

## Distributor Relationship:

- Ingram Micro
- Synnex
- TechData
- ARROW
- Carahsoft
- ScanSource
- Graybar

**Geography Covered:** US nationwide; Headquarters: Southern California

**Founder and Point of Contact:** Cathy Hsieh, CEO, Prior work experience: 10 years with Microsoft, 3 years with Honeywell, MBA from Cornell; BS in Electrical Engineering from UCLA; cathyh@kambrian.com, Cell: (626) 374-3933; Company founded in 2009;

**Insurance Coverage:** Commercial General Liability (\$1 million each occurrence and \$2 aggregate); Auto Liability (\$1 million); Workers Comp & Employers Liability (\$1 million)