

IT – Managed Service Provider

Virtualization



Networking



Security



Storage



Data Center – HPE Partner



Networking

Server



Storage

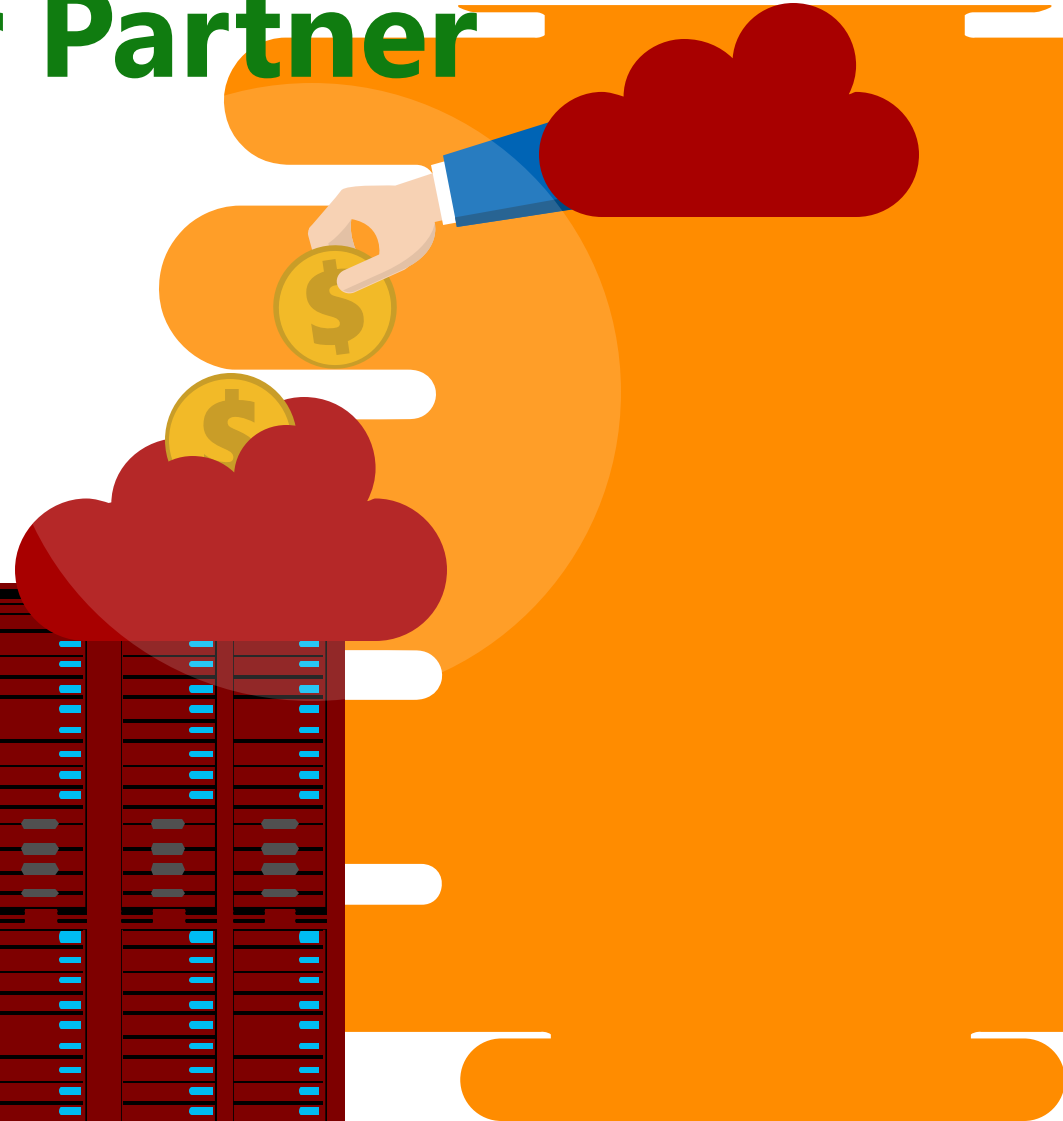
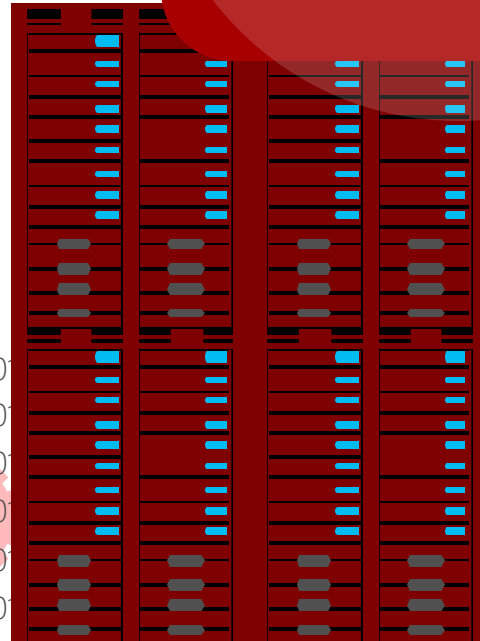
Kambrian



**Hewlett Packard
Enterprise**



Cloud – Microsoft Silver Partner



Services – Consult, Install, Maintain

IT

- Cloud migration
- Workload Analysis
- Configuration
- Product Selection
- Procurement
- Tech Support

Telecom

- Data center build-out
- Telecom closet
- Servers
- Routers
- Switches
- WAP

Security

- Video management systems
- Access Control
- CCTV
- Door Contact
- Motion Detector
- Panic buttons

Structured Cabling

- New construction
- Remodeling
- Decommission
- Maintenance
- Data, voice, video
- AV

Telecom Projects

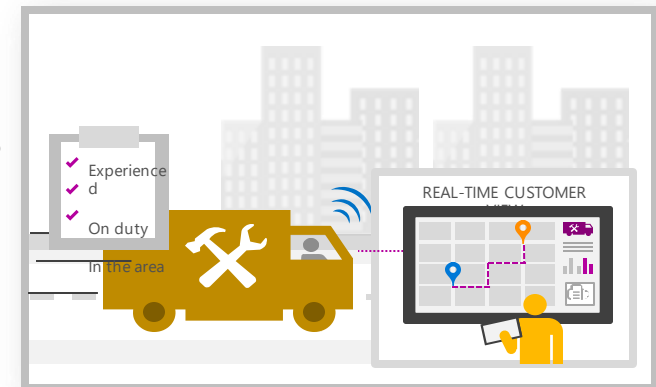


El Camino Hospital in Mountain View, CA

- 30 IDF (telecom rooms) scattered throughout 10 buildings
- Time frame: Dec 2014-May 2016
- Populated new state-of-the-art data center
- Racked/stacked all equipment like switches, routers
- Dressed and labeled copper and fiber cables
- Port Mapping, testing, dressing, and labeling
- Added new switches
- Decommissioning equipment, wiping old switches and routers
- Removed antiquated intermediate patching systems

UCSF, San Francisco, CA

- Refreshed 10-12 IDF at two locations
- Rack/stack new networking equipment
- Re-locate networking equipment
- Cut-over overnight



Telecom Projects

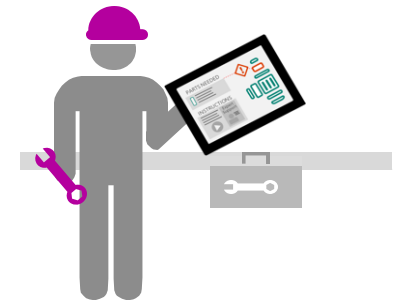


Data Center – UCLA Hospital (Cisco Upgrade)

- Racked and stacked of new switches
- Installed and cross connected of the existing network to new switches.
- Switches were installed, connected, and tested before any patient connections were made.
- 17,000 connections were completed without noticeable impact to patient care.
- 6 techs x 1.5 yrs
- \$1 mil contract

State of CA Superior Courts throughout LA County (Inglewood, West Covina, Whittier, East LA:

- Upgrade CISCO equipment
- \$20K project size per location



Physical Security Project



Kambrianites

Kambrian



Utility Company

- Tier 2 to Security solution provider for their big utility customer
- Video Surveillance: Genetec Video Management Systems
- Access Control: AMAG
- IP Cameras
- 35 sites or \$800K project (7 completed as of 8/18)
- Each site is 240 man hrs or 6 techs x 1 wk or \$20K/site
- Each site: approx. 11 cameras, 5 motion detectors, 5 glass breaks, access control, 1 intrusion detection system, racks in IT room (switch, UPS, power supply, coder/decoder, KVM)

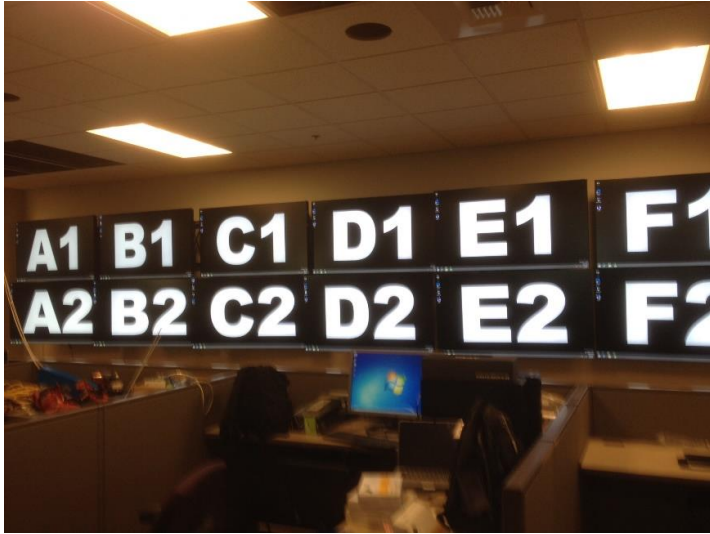


Cameras



KVM, Racks, Power Supply, UPS

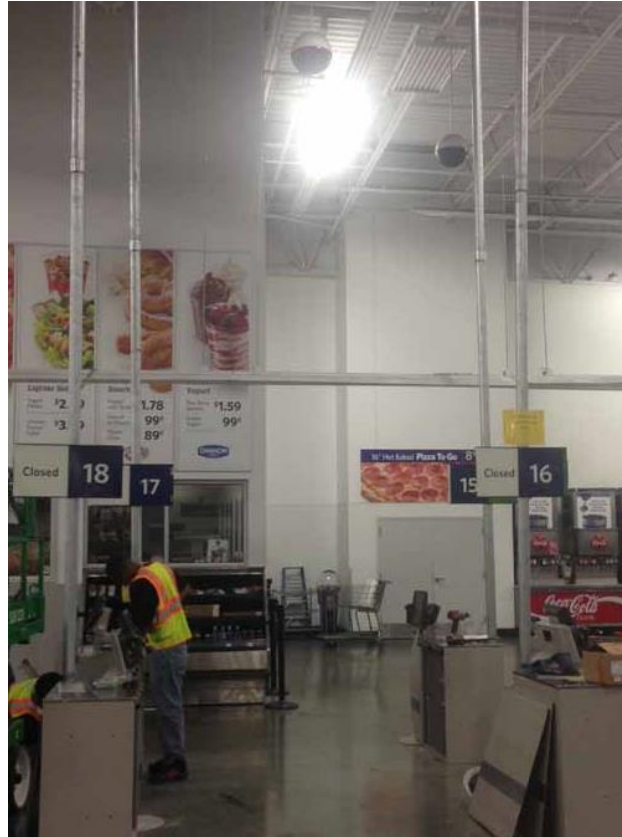
Other Sample Projects



Government – CalOES (video wall)

- Designs, Procurement, & Install
- Mounted 14 of the 55' adjoining NEC displays
- Software Engineer completed the network testing and Hiperwall software implementation

Retail Store – Walmart (power pole, voice, data)



- Multi-site rollout across CA, NV, AR for multiple projects (scopes)
- PoS, paging systems
- Move cash registers; mounted power poles ; Installed new data cables to existing switches.



Commercial Bldg - CBS

- Installed (4) cables to (111) work stations across (3) floors. I
- Installed "J-HOOK" cable pathways above the ceiling on each of the (3) floors,
- Installed fiber (single-mode and multi-mode); Rod/rope underground structure

Our Value Prop

Scalability

Wide geographic coverage (travel nation-wide)

Scaling up by building teaming of technicians and engineers

Ability to work shorten timeline with multiple shifts and weekend jobs

Quality

Experienced technicians average 20 years of expertise

Experience with GMP environment

Responsiveness and responsibility

Flexibility

Experience and willingness to work as Tier-2 (GC or building control primes)

Ability to take on projects as well as service tickets



**Our Customers Sleep Better
@ Night!**

Kambrian Corporation